

Qty. Description

1 TP 40-180/2 A-F-A-BUBE

Product No.: [96401986](#)

Single-stage, close-coupled, volute pump with in-line suction and discharge ports of identical diameter. The pump is of the top-pull-out design, i.e. the power head (motor, pump head and impeller) can be removed for maintenance or service while the pump housing remains in the pipework.

The pump is fitted with an unbalanced rubber bellows seal.

The shaft seal is according to EN 12756. Pipework connection is via PN 6/10 DIN flanges (EN 1092-2 and ISO 7005-2).

The pump is fitted with a fan-cooled asynchronous motor.

Liquid:

Pumped liquid: Water
 Liquid temperature range: 0 .. 140 °C
 Selected liquid temperature: 20 °C
 Density: 998.2 kg/m³

Technical:

Pump speed on which pump data are based: 2860 rpm
 Rated flow: 12.5 m³/h
 Rated head: 10 m
 Actual impeller diameter: 98 mm
 Code for shaft seal: BUBE
 Curve tolerance: ISO9906:2012 3B

Materials:

Pump housing: Cast iron
 EN-JL1040
 A48-40 B
 Impeller: Stainless steel
 1.4301
 304

Installation:

t max amb: 40 °C
 Maximum operating pressure: 10 bar
 Type of connection: DIN
 Size of connection: DN 40
 Pressure rating for connection: PN 6/10
 Port-to-port length: 250 mm

Electrical data:

Motor type: 80A
 Rated power - P2: 0.55 kW
 Mains frequency: 50 Hz
 Rated voltage: 1 x 220-230/240 V
 Rated current: 4.00/3.65 A
 Starting current: 280 %
 Cos phi - power factor: 0.99
 Rated speed: 2750 rpm
 Motor efficiency at full load: 66-64 %
 Number of poles: 2
 Enclosure class (IEC 34-5): 55 Dust/Jetting
 Insulation class (IEC 85): F
 Motor No: 85215103

Others:

Minimum efficiency index, MEI ≥: 0.70
 Net weight: 27.2 kg



Company name:

Created by:

Phone:

Date:

19/10/2022

Qty.	Description
------	-------------

1	Gross weight: 31.4 kg Shipping volume: 0.12 m ³
---	---



Company name:

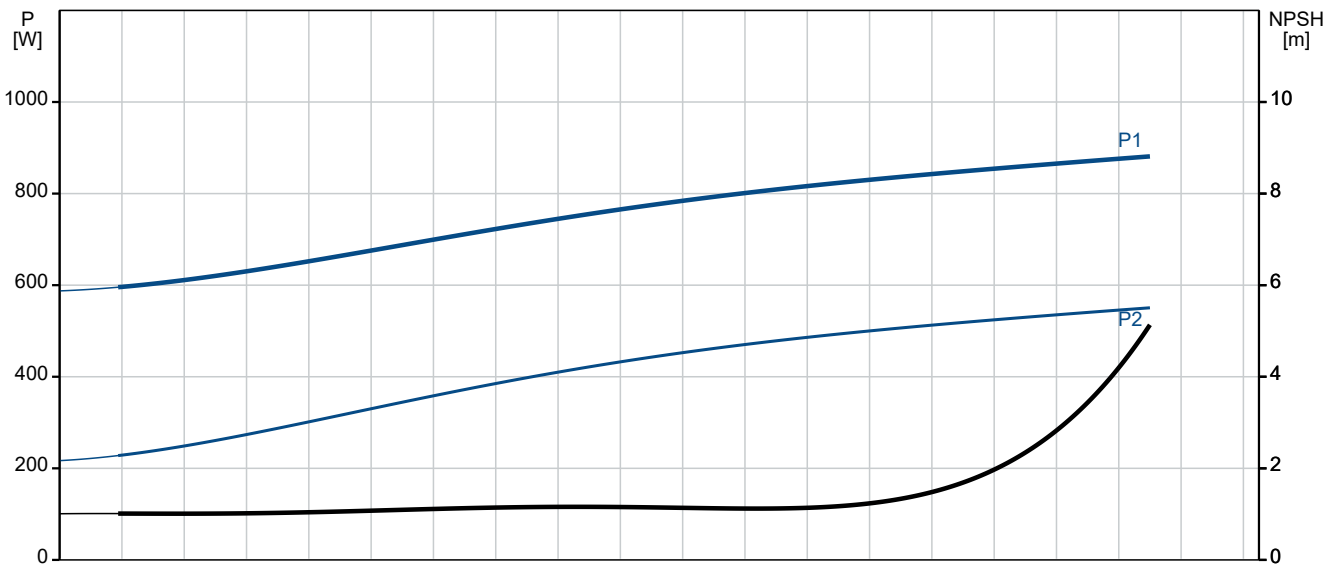
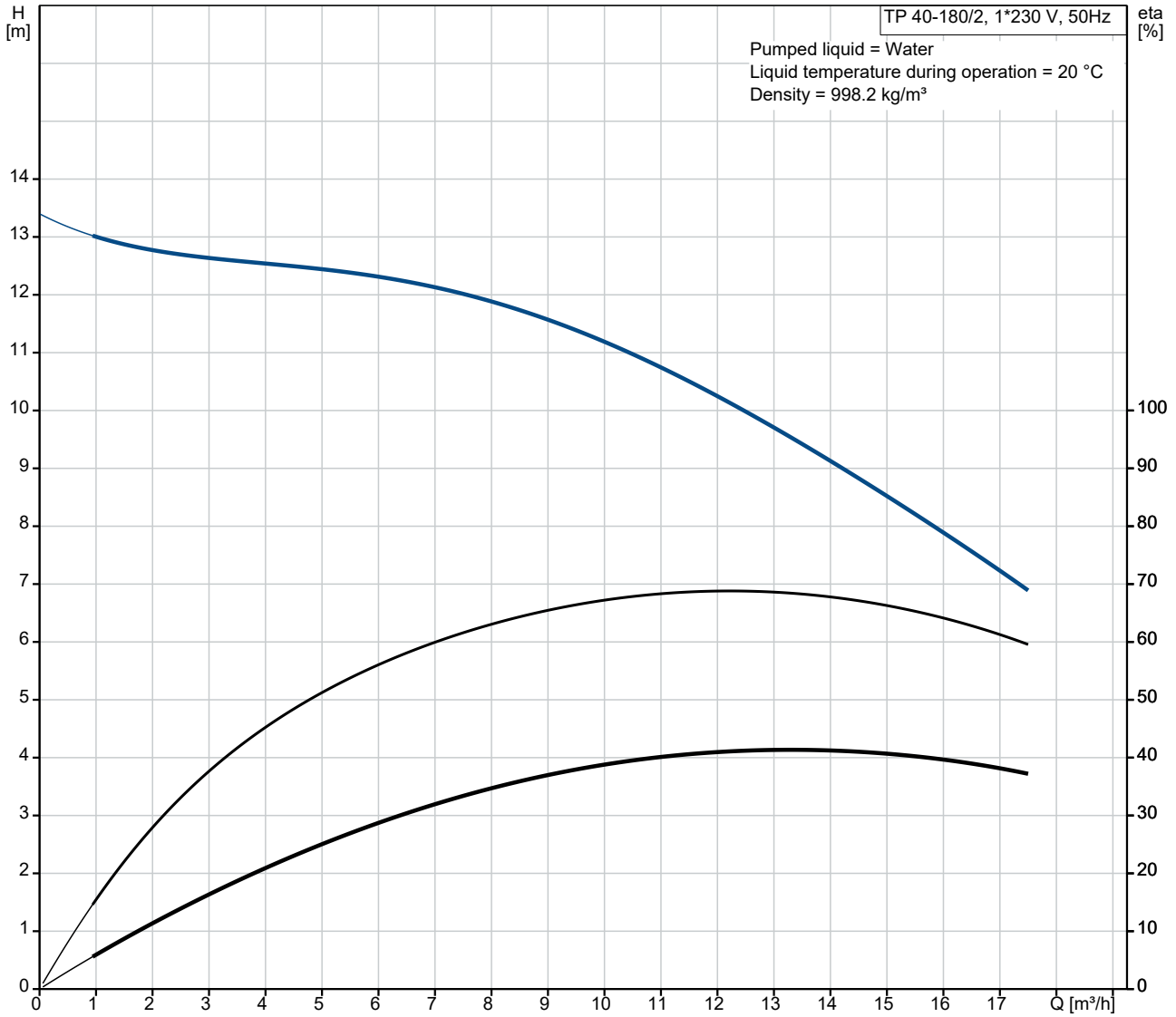
Created by:

Phone:

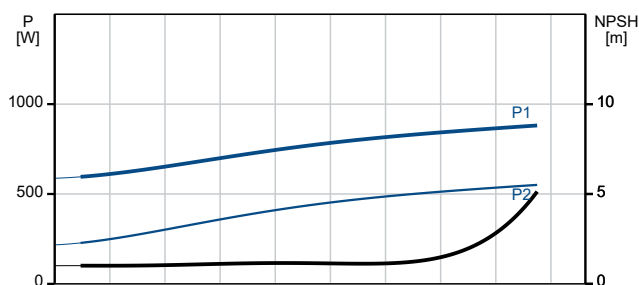
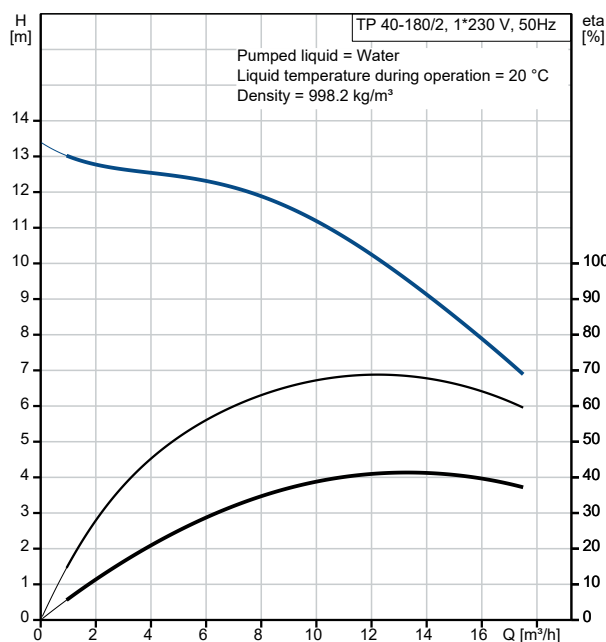
Date:

19/10/2022

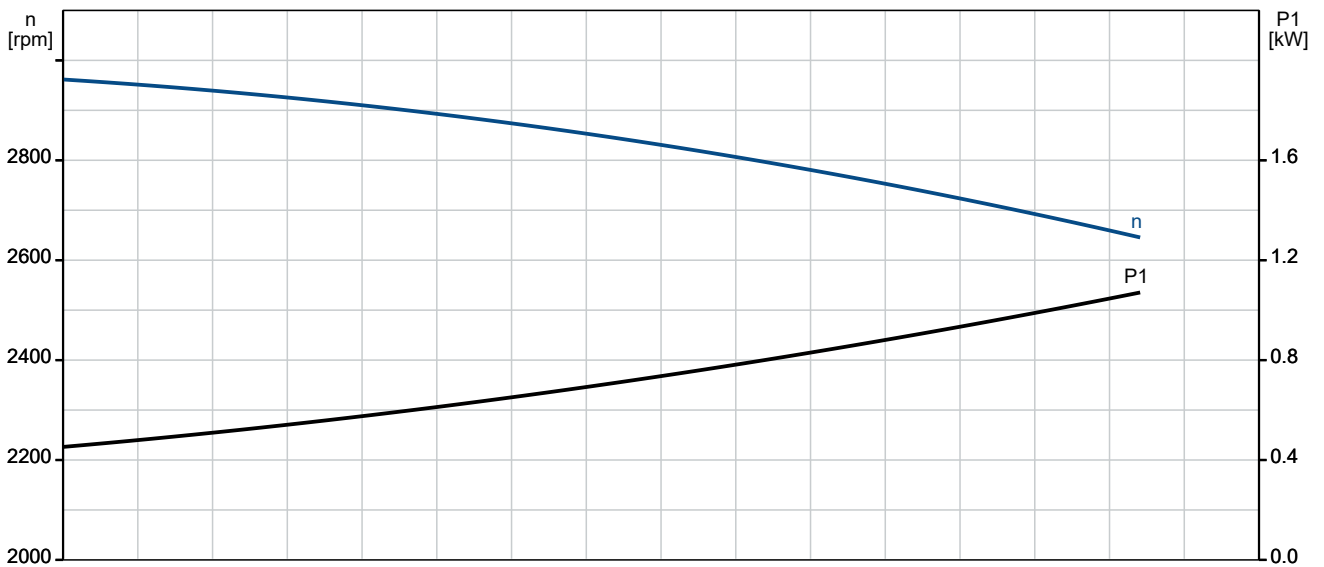
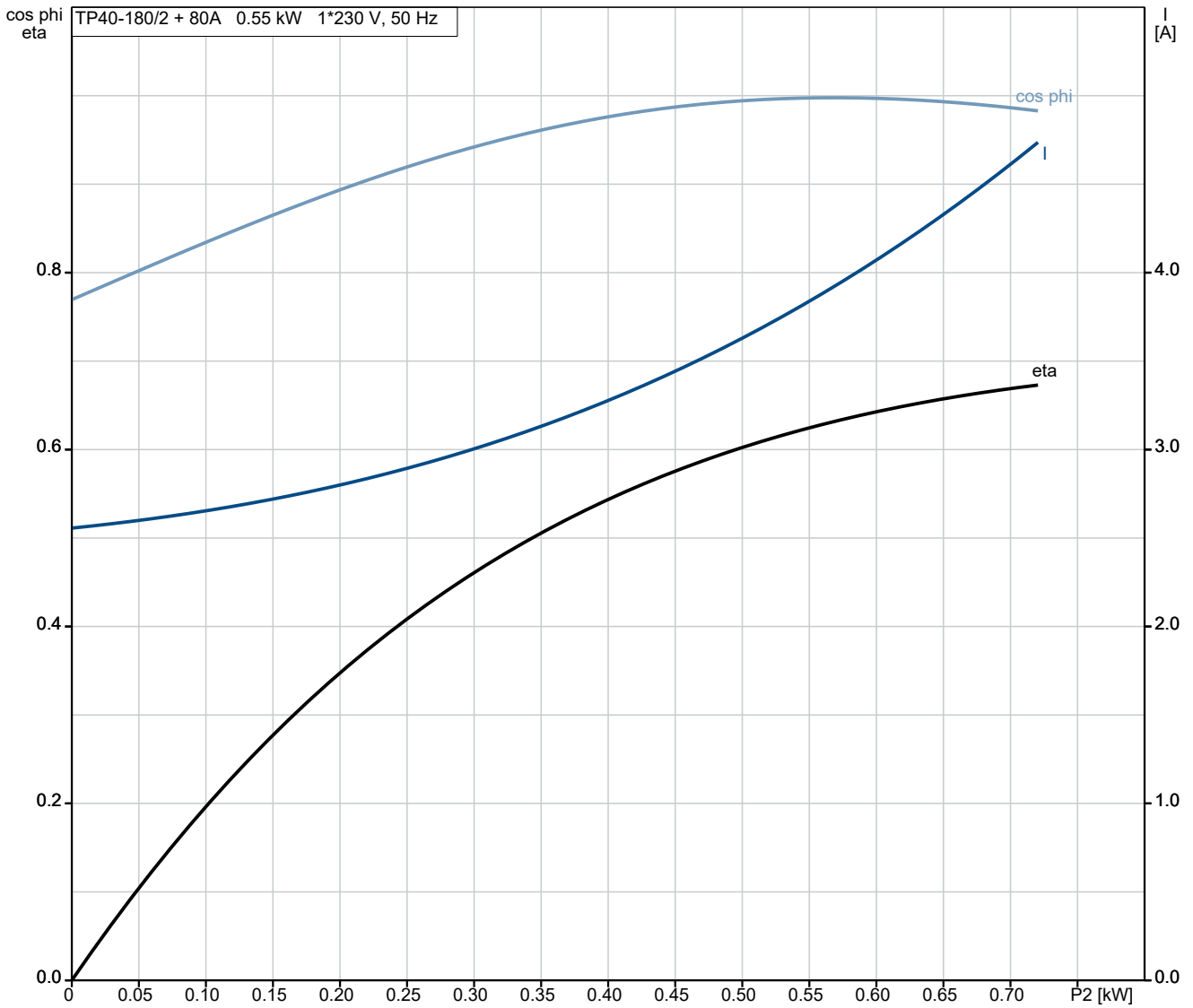
96401986 TP 40-180/2 A-F-A-BUBE 50 Hz



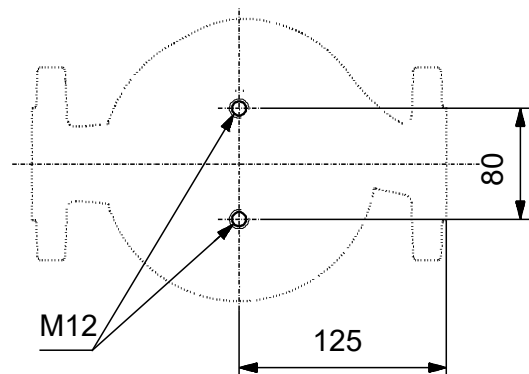
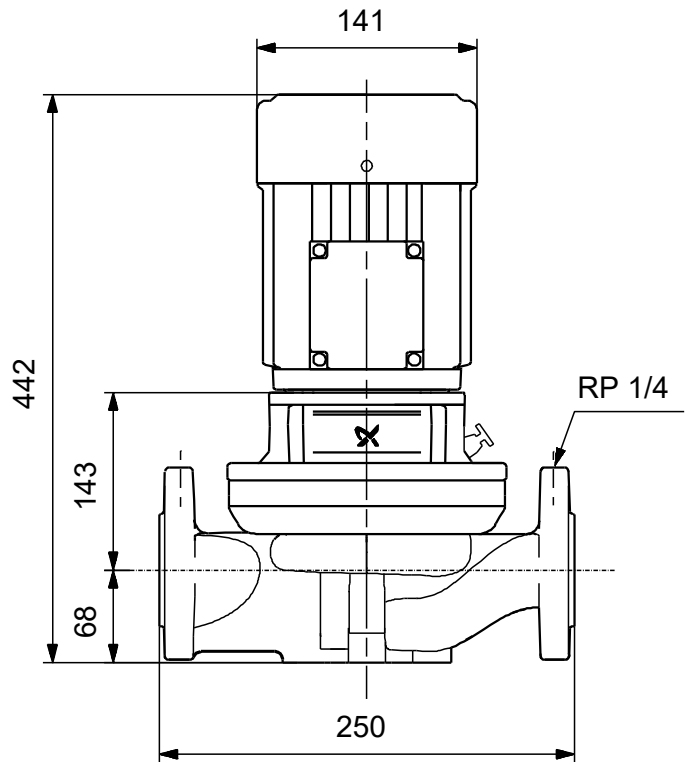
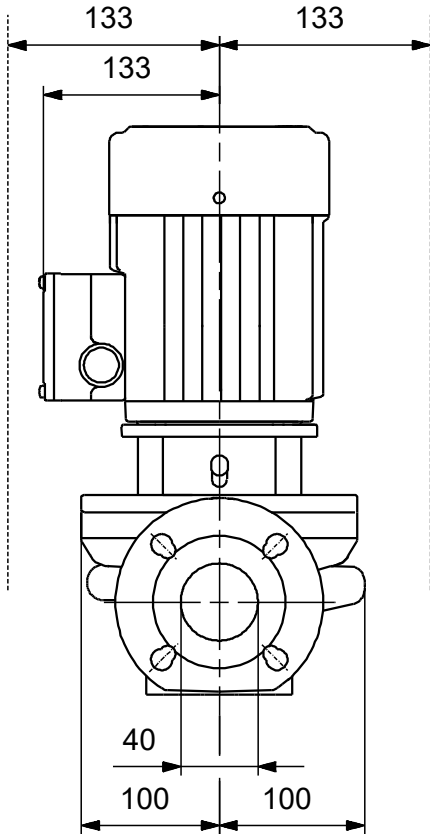
Description	Value
General information:	
Product name:	TP 40-180/2 A-F-A-BUBE
Product No:	96401986
EAN number:	5700390656379
Price:	
Technical:	
Pump speed on which pump data are based:	2860 rpm
Rated flow:	12.5 m ³ /h
Rated head:	10 m
Maximum head:	180 dm
Actual impeller diameter:	98 mm
Code for shaft seal:	BUBE
Curve tolerance:	ISO9906:2012 3B
Pump version:	A
Materials:	
Pump housing:	Cast iron
Pump housing:	EN-JL1040
Pump housing:	A48-40 B
Impeller:	Stainless steel
Impeller:	1.4301
Impeller:	304
Material code:	A
Installation:	
t max amb:	40 °C
Maximum operating pressure:	10 bar
Type of connection:	DIN
Size of connection:	DN 40
Pressure rating for connection:	PN 6/10
Port-to-port length:	250 mm
Connect code:	F
Liquid:	
Pumped liquid:	Water
Liquid temperature range:	0 .. 140 °C
Selected liquid temperature:	20 °C
Density:	998.2 kg/m ³
Electrical data:	
Motor type:	80A
Rated power - P2:	0.55 kW
Mains frequency:	50 Hz
Rated voltage:	1 x 220-230/240 V
Rated current:	4.00/3.65 A
Starting current:	280 %
Cos phi - power factor:	0.99
Rated speed:	2750 rpm
Motor efficiency at full load:	66-64 %
Number of poles:	2
Enclosure class (IEC 34-5):	55 Dust/Jetting
Insulation class (IEC 85):	F
Built-in motor protection:	PTO
Motor No:	85215103
Others:	
Minimum efficiency index, MEI ≥:	0.70
Net weight:	27.2 kg
Gross weight:	31.4 kg
Shipping volume:	0.12 m ³



96401986 TP 40-180/2 A-F-A-BUBE 50 Hz

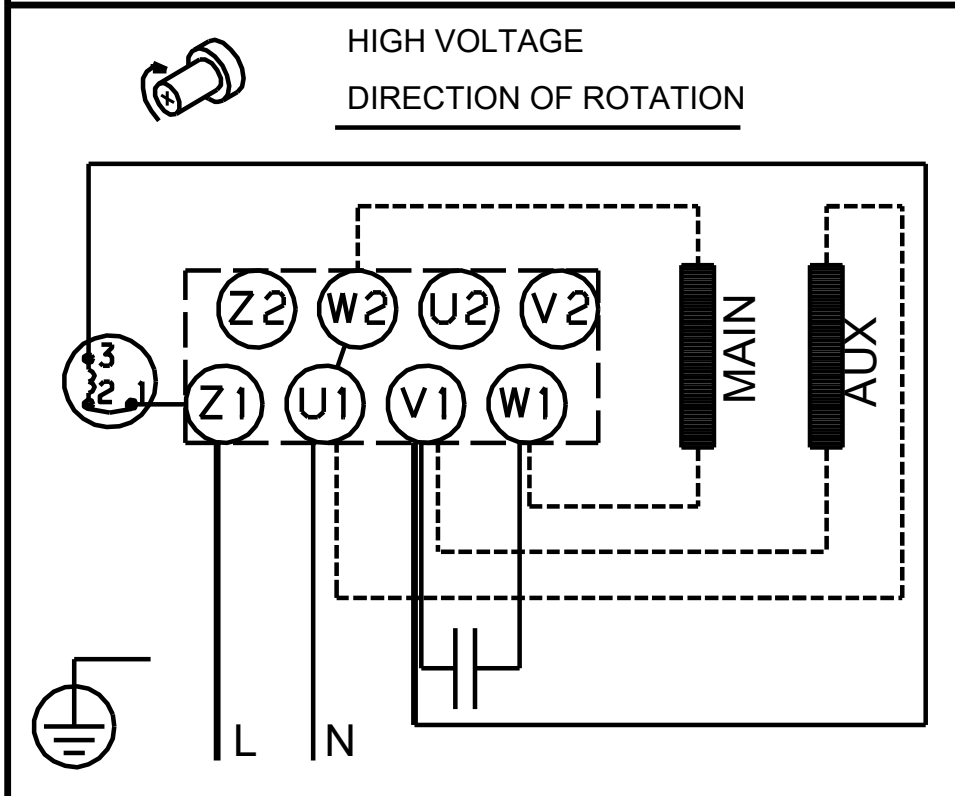
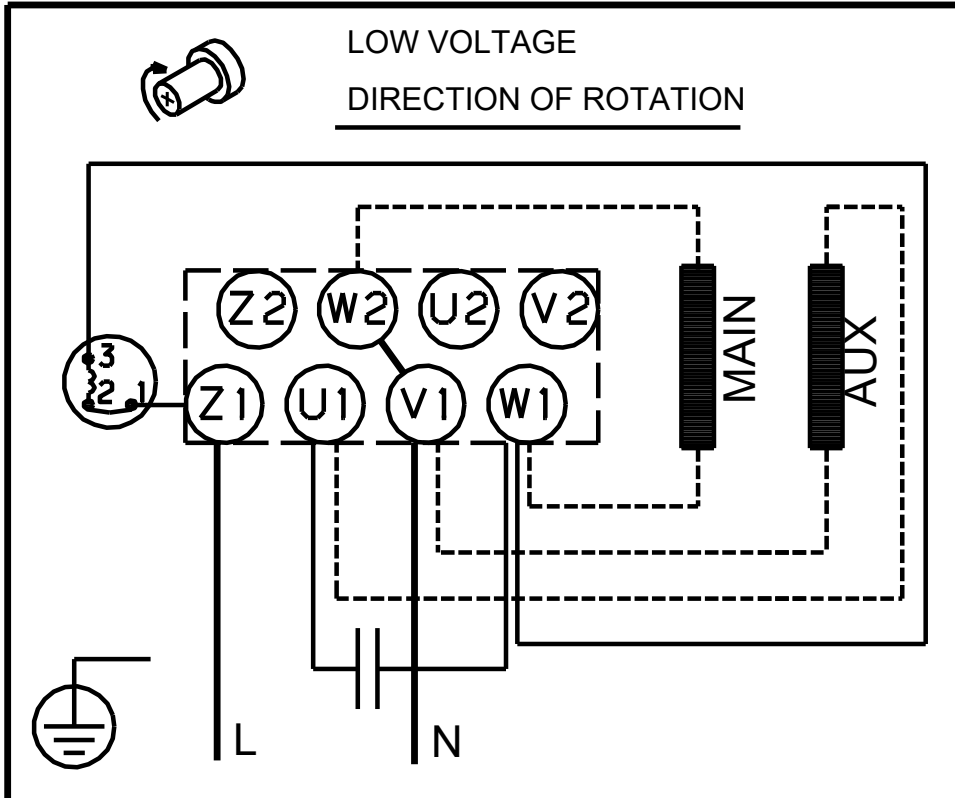


96401986 TP 40-180/2 A-F-A-BUBE 50 Hz



Note! All units are in [mm] unless others are stated.
Disclaimer: This simplified dimensional drawing does not show all details.

96401986 TP 40-180/2 A-F-A-BUBE 50 Hz



Note! All units are in [mm] unless others are stated.