

FAGGIOLATI PUMPS S.p.A.

CURVA CARATTERISTICA
PERFORMANCE CURVE

Serie 7B	Tipo di pompa - Pump type G271T6T2-J6AA0	Curva - Curve T707-210
Codice disegno - Drawing code		707_40_07_2

Cod. Code 7002051	Peso totale Total weight 40 Kg	Materiale Construction GHISA EN-GJL-250 CAST IRON EN-GJL-250	Girante Impeller TRITURATORE GRINDER	
-----------------------------	--	--	--	---

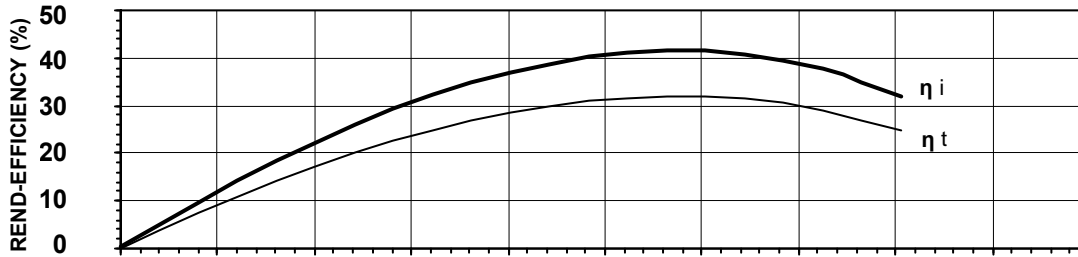
Idraulica - Hydraulic	
MANDATA DISCHARGE	40 mm
ASPIRAZIONE SUCTION	- mm
PASSAGGIO LIBERO FREE PASSAGE	6 mm
DIAMETRO GIRANTE IMPELLER DIAMETER	136 mm

Motore- Motor		M271T/M - 07312		
ALIMENTAZIONE POWER SUPPLY	3ph 400V-50Hz			
CLASSE DI ISOLAMENTO INSULATION CLASS	H			
VELOCITÀ NOMINALE NOMINAL SPEED	2810 rpm			
POTENZA NOMINALE MOTORE NOMINAL MOTOR POWER	1,4 kW			
CORRENTE DI SPUNTO STARTING CURRENT	14 A			
CORRENTE NOMINALE NOMINAL CURRENT	3,5 A			
MOMENTO DI INERZIA TOTALE TOTAL MOMENT OF INERTIA	0,0021 kgm2			
	CARICO-LOADING			
	4/4	3/4	1/2	
FATTORE DI POTENZA POWER FACTOR	0,75	0,68	0,60	
RENDIMENTO MOTORE MOTOR EFFICIENCY	77 %	77 %	75 %	

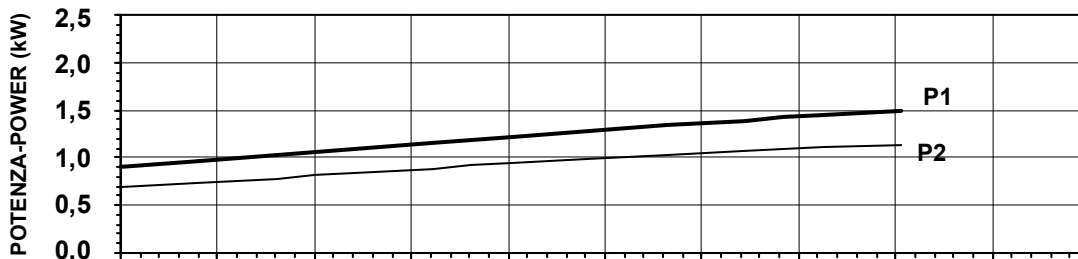
Impiego - Application	
TEMP. MAX DEL LIQUID PUMPED LIQUID MAX TEMP.	< 40 °C
DENSITÀ MAX DEL LIQUID PUMPED LIQUID MAX DENSITY	1,2 Kg/dm³
PROTEZIONE MECCANICA MECHANICAL PROT. DEGREE	IP 68
CAVO CABLE	4G1,5 H07RNF

Rend. max - Best efficiency	
RENDIMENTO TOTALE TOTAL EFFICIENCY	31,9 %
RENDIMENTO IDRAULICO HYDRAULIC EFFICIENCY	41,5 %
POT. ASS. DALLA RETE ABS. POWER FROM MAINS	1,4 kW
PREVALENZA HEAD	14,5 m
PORTATA CAPACITY	10,5 m³/h

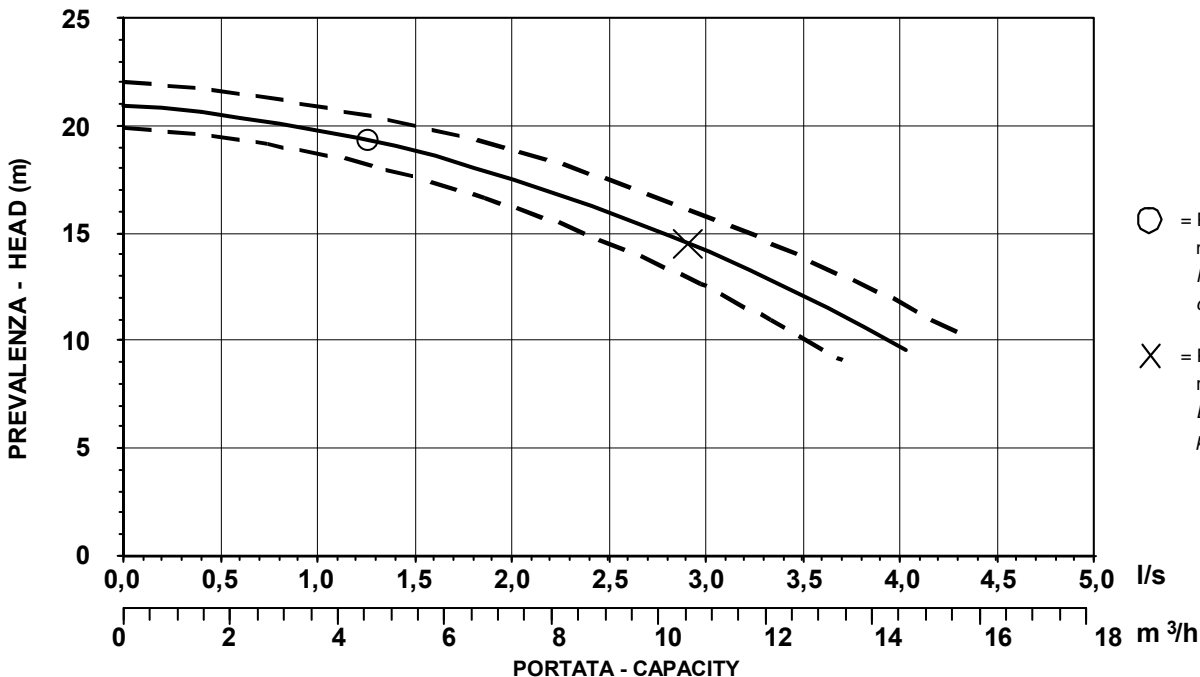
Protezioni - Protections	
PROTEZIONE TERMICA THERMAL PROTECTION	<input type="checkbox"/> NO
CONTROLLO INFILTRAZIONE HUMIDITY PROBE	<input type="checkbox"/> NO
Ex d IIB T4	<input type="checkbox"/> NO
MANTELLO DI RAFFREDDAMENTO COOLING JACKET	<input type="checkbox"/> NO



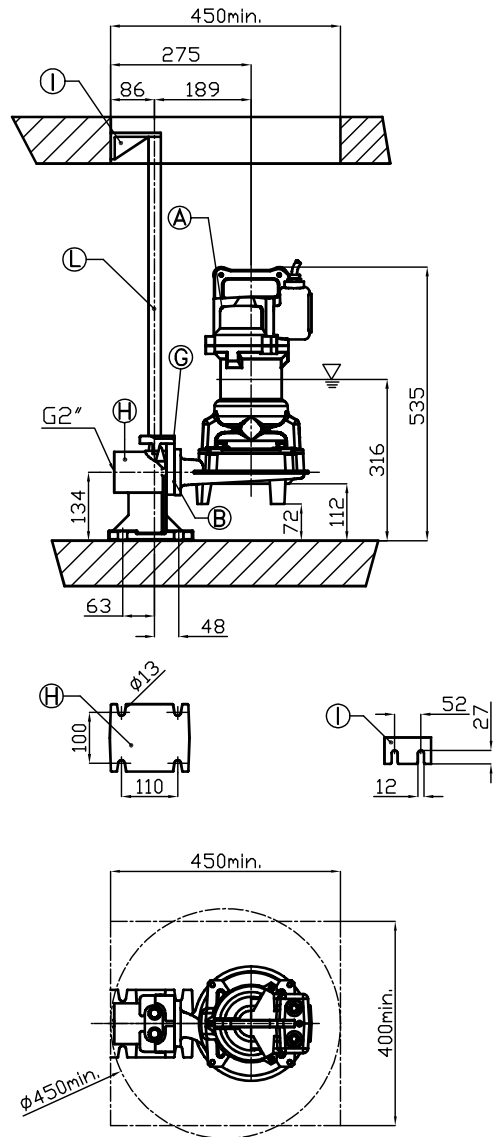
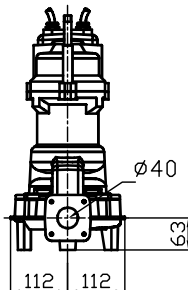
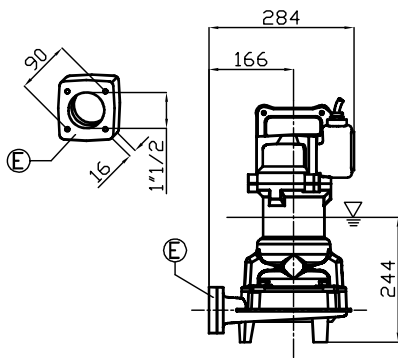
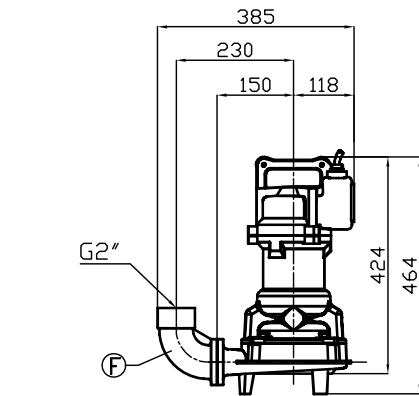
η_i = Rendimento idraulico
Hydraulic efficiency
 η_t = Rendimento totale
Total efficiency



P1 = Potenza ass. dalla rete
Abs. power from mains
P2 = Potenza idraulica
Hydraulic power



○ = Portata minima
Minimum capacity
X = Punto max rendimento
Best efficiency point



R

Pos.	Codice	Descrizione	Materiale	Peso Kg
Pos.	Code	Description	Material	Weight Kg
A	-	Elettropompa Sommersibile Submersible Pump	-	-
B	54.09310	Guarnizione DN50 Rubber joint DN50	Neoprene Neoprene	-
Type: R GPADN502T				
G	GCADN50	Controflangia accoppiamento 2 guide DN50 Double guide rail coupling flange DN50	G250 Ghisa G250 Cast-Iron	1,5
H	GBPACDN502T	Piede d'accoppiamento 2 guide DN50 Double guide coupling feet DN50	G250 Ghisa G250 Cast-Iron	6
I	SOP2TDN50	Sopporto tubi superiore 2 guide 3/4 Double guide rail upper support 3/4	G250 Ghisa G250 Cast-Iron	1,1
L	TG3/4Z	Tubo guida 3/4 Guide rail 3/4	Acciaio zincato Galvanized Steel	-
Type: S				
E	GF1.1/2T	Flangetta filettata 1 1/2 Threaded flange 1 1/2	G250 Ghisa G250 Cast-Iron	1
F	GCF2	Curva filettata 90° 2" Threaded elbow 90° 2"	G250 Ghisa G250 Cast-Iron	3

▽ LIVELLO MINIMO DI
SOMMERSIBILITÀ
▽ MINIMUM
SUBMERSIBLE LEVEL

S