

Sewage Pumps

Submersible Pumps - Cast Iron	71
VXC, MC, VXC-F, MC-F	
Submersible Pumps with Grinder	74
Tritus	
Submersible Pumps - Cast Iron	75
VX40, BC35, VXC4, MC4	
Dreno Drainage / Sewage Pumps	77
Compatta Evo, DNB, A Series, V Series, VTH Series, G Series	
Dreno Accessories	84

VXC



Submersible Vortex Pumps for Wastewater/Sewage*

MODEL	STOCK CODE	PRICE	MODEL	STOCK CODE	PRICE	POWER		PERFORMANCE	
						P ₂		Q	H
Single-Phase		£	Three-Phase		£	kW	HP	L/min	m
VXCm10/35	2301510	731.00	VXC10/35	2301570	747.00	0.75	1	50 ÷ 400	10 ÷ 2
VXCm15/35	2301520	849.00	VXC15/35	2301580	865.00	1.1	1.5	50 ÷ 500	13.5 ÷ 2
VXCm10/45	2301540	747.00	VXC10/45	2301600	763.00	0.75	1	50 ÷ 550	8.5 ÷ 1.5
VXCm15/45	2301550	865.00	VXC15/45	2301610	881.00	1.1	1.5	50 ÷ 650	11 ÷ 2

- Power cable: 10 metres as standard
- Two mechanical seals separated by an oil chamber
- External float switch: standard issue on Single-Phase versions. Manual versions without float switch are available for Single-Phase and are standard for Three-Phase.

* Max. passage of suspended solids:
 VXC /35-N up to Ø 40mm
 VXC 45-N up to Ø 50mm

Impeller type:
 VORTEX AISI 304 stainless steel
 VORTEX AISI 304 stainless steel

MC



Submersible Double-Channel Pumps for Wastewater/Sewage*

MODEL	STOCK CODE	PRICE	MODEL	STOCK CODE	PRICE	POWER		PERFORMANCE	
						P ₂		Q	H
Single-Phase		£	Three-Phase		£	kW	HP	L/min	m
MCm10/45	2301620	849.00	MC 10/45	2301640	865.00	0.75	1	50 ÷ 600	11 ÷ 2
MCm15/45	2301630	934.00	MC 15/45	2301650	934.00	1.1	1.5	50 ÷ 750	14 ÷ 2.7

- Power cable: 10 metres as standard
- Two mechanical seals separated by an oil chamber
- External float switch: standard issue on Single-Phase versions. Manual versions without float switch are available for Single-Phase and are standard for Three-Phase.

* Max. passage of suspended solids:
 MC /45 up to Ø 40mm

Impeller type:
 Double-channel AISI 304 stainless steel

VXC



Submersible Free-Standing Vortex Pumps for Wastewater/Sewage*

MODEL	STOCK CODE	PRICE	MODEL	STOCK CODE	PRICE	POWER		PERFORMANCE	
						P ₂		Q	H
Single-Phase		£	Three-Phase		£	kW	HP	L/min	m
VXCm15/50	2301660	1565.00	VXC15/50	2301720	1530.00	1.1	1.5	100 ÷ 600	1.1 ÷ 1.5
VXCm20/50	2301670	1645.00	VXC20/50	2301730	1565.00	1.5	2	100 ÷ 700	12.5 ÷ 2.5
VXCm30/50	2301680	2108.00	VXC30/50	2301740	1597.00	2.2	3	100 ÷ 850	15.5 ÷ 2
-	-	-	VXC40/50	2301750	1903.00	3	4	100 ÷ 1050	19 ÷ 2
VXCm15/65	2301690	1632.00	VXC15/65	2301760	1597.00	1.1	1.5	200 ÷ 850	7 ÷ 1
VXCm20/65	2301700	1748.00	VXC20/65	2301770	1629.00	1.5	2	200 ÷ 1000	8.5 ÷ 1
VXCm30/65	2301710	2175.00	VXC30/65	2301780	1665.00	2.2	3	200 ÷ 1200	11.1 ÷ 1.5
-	-	-	VXC40/65	2301790	1970.00	3	4	200 ÷ 1250	15 ÷ 1.5

- Power cable: 10 metres as standard

* Max. passage of suspended solids:

VXC /50 up to Ø 50 mm

VXC /65 up to Ø 65 mm

Impeller type:

Cast iron VORTEX

Cast iron VORTEX

- Standard supply Single-Phase version:
 - external float switch (manual pump available on request)
 - capacitor box with capacitor included
 - protector built-in to the motor winding

2.2 kW Single-Phase pumps, the thermal overload protector must be connected to the external control panel

For three-phase water pumps three thermal overload protection are built-in to the winding, in series, and must be connected to the control box

MC



Submersible Free-Standing Double-Channel Pumps for Wastewater/Sewage

MODEL	STOCK CODE	PRICE	MODEL	STOCK CODE	PRICE	POWER		PERFORMANCE	
						P ₂		Q	H
Single-Phase		£	Three-Phase		£	kW	HP	L/min	m
MCm15/50	2301800	1664.00	MC15/50	2301840	1629.00	1.1	1.5	100 ÷ 800	14 ÷ 1
MCm20/50	2301810	1750.00	MC20/50	2301850	1664.00	1.5	2	100 ÷ 900	16 ÷ 1
MCm30/50	2301820	2175.00	MC30/50	2301860	1699.00	2.2	3	100 ÷ 1100	22 ÷ 2
-	-	-	MC40/50	2301870	1970.00	3	4	100 ÷ 1100	24 ÷ 4
MCm30/65	2301830	2331.00	MC30/65	2301880	1788.00	2.2	3	200 ÷ 1500	12 ÷ 2
-	-	-	MC40/65	2301890	2060.00	3	4	200 ÷ 1600	15 ÷ 4

- Power cable: 10 metres as standard

* Max. passage of suspended solids:

MC 50 up to Ø 50mm

MC 65 up to Ø 70mm

Impeller type:

Double-channel AISI 304 stainless steel

Double-channel AISI 304 stainless steel

- Standard supply Single-Phase version:
 - external float switch (manual pump available on request)
 - capacitor box with capacitor included
 - capacitor (inside the control panel)
 - protector built-in to the motor winding

2.2 kW Single-Phase pumps, the thermal overload protector must be connected to the external control panel

For three-phase water pumps three thermal overload protection are built-in to the winding, in series, and must be connected to the control box

VXC-F



Submersible Guide Rail Mounted Vortex Pumps for Wastewater/Sewage

MODEL	STOCK CODE	PRICE	MODEL	STOCK CODE	PRICE	POWER		PERFORMANCE	
						P ₂		Q	H
Single-Phase		£	Three-Phase		£	kW	HP	L/min	m
VXCm15/50-F	2301900	1645.00	VXC15/50-F	2301960	1610.00	1.1	1.5	100 ÷ 600	1.1 ÷ 1.5
VXCm20/50-F	2301910	1725.00	VXC20/50-F	2301970	1645.00	1.5	2	100 ÷ 700	12.5 ÷ 2.5
VXCm30/50-F	2301920	2188.00	VXC30/50-F	2301980	1677.00	2.2	3	100 ÷ 850	15.5 ÷ 2
-	-	-	VXC40/50-F	2301990	1983.00	3	4	100 ÷ 1050	19 ÷ 2
VXCm15/65-F	2301930	1712.00	VXC15/65-F	2302000	1677.00	1.1	1.5	200 ÷ 850	7 ÷ 1
VXCm20/65-F	2301940	1828.00	VXC20/65-F	2302010	1709.00	1.5	2	200 ÷ 1000	8.5 ÷ 1
VXCm30/65-F	2301950	2255.00	VXC30/65-F	2302020	1745.00	2.2	3	200 ÷ 1200	11.1 ÷ 1.5
-	-	-	VXC40/65-F	2302030	2050.00	3	4	200 ÷ 1250	15 ÷ 1.5

- Power cable: 10 metres as standard
- Impeller: **cast iron VORTEX**

MC-F



Submersible Guide Rail Mounted Double-Channel Pumps for Wastewater/Sewage

MODEL	STOCK CODE	PRICE	MODEL	STOCK CODE	PRICE	POWER		PERFORMANCE	
						P ₂		Q	H
Single-Phase		£	Three-Phase		£	kW	HP	L/min	m
MCm15/50-F	2302040	1744.00	MC15/50-F	2302080	1709.00	1.1	1.5	100 ÷ 800	14 ÷ 1
MCm20/50-F	2302050	1830.00	MC20/50-F	2302090	1744.00	1.5	2	100 ÷ 900	16 ÷ 1
MCm30/50-F	2302060	2255.00	MC30/50-F	2302100	1779.00	2.2	3	100 ÷ 1100	22 ÷ 2
-	-	-	MC40/50-F	2302110	2050.00	3	4	100 ÷ 1100	24 ÷ 4
MCm30/65-F	2302070	2411.00	MC30/65-F	2302120	1868.00	2.2	3	200 ÷ 1500	12 ÷ 2
-	-	-	MC40/65-F	2302130	2140.00	3	4	200 ÷ 1600	15 ÷ 4

- Power cable: 10 metres as standard
- Impeller: **DOUBLE-CHANNEL precision cast stainless steel AISI 304**

Standard supply Single-Phase version:

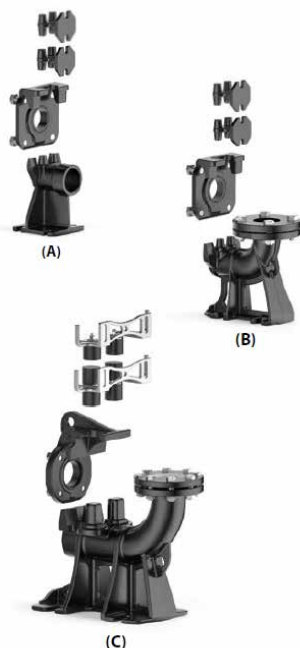
- external float switch (manual pump available on request)
- capacitor box with capacitor included
- capacitor (inside the control panel)
- protector built-in to the motor winding

2.2 kW Single-Phase pumps, the thermal overload protector must be connected to the external control panel

For three-phase water pumps three thermal overload protection are built-in to the winding, in series, and must be connected to the control box

Guide Rail Kits

For Pump	Stock Code	DN	£
HORIZONTAL DELIVERY WITH ¾" RAILS (A)			
For VXC -50-F, MC /50-F	2302140	¾"	192.00
VERTICAL DELIVERY WITH ¾" RAILS (B)			
For VXC -50-F, MC /50-F	2302150	¾"	323.00
For VXC -65-F, MC /65-F	2302160	¾"	492.00
VERTICAL DELIVERY WITH 2" RAILS (C)			
For VXC -50-F, MC /50-F	2302170	2"	993.00
For VXC -65-F, MC /65-F	2302180	2"	1156.00
SLIDE GUIDES			
For VXC -50-F, MC /50-F with guide tubes Ø ¾"	2302190	¾"	117.00
For VXC -65-F, MC /65-F with guide tubes Ø ¾"	2302200	¾"	175.00
For VXC -50-F, MC /50-F with guide tubes Ø 2"	2302210	2"	222.00
For VXC -65-F, MC /65-F with guide tubes Ø 2"	2302220	2"	339.00
INTERMEDIATE SUPPORT			
For guide tube Ø ¾"	2302230	¾"	35.00
For guide tube Ø 2"	2302240	2"	179.00



TRITUS-TX



Submersible Pumps c/w Grinder

MODEL	STOCK CODE	PRICE £	POWER P ₂		PERFORMANCE	
			kW	HP	Q L/min	H m
Single-Phase TRITUS-TX	2305460	637.00	0.75	0.75	10 ÷ 90	11.5 ÷ 1

- Grinder: high resistance tempered stainless steel
- Power cable: 10 metres as standard

TRITUS-INOX



Submersible Pumps c/w Grinder

MODEL	STOCK CODE	PRICE £	POWER P ₂		PERFORMANCE	
			kW	HP	Q L/min	H m
Single-Phase TIGm 0.55	2302250	1086.00	0.55	0.75	50 ÷ 600	11 ÷ 2
TIGm 0.75	2302260	1118.00	0.75	1	50 ÷ 600	11 ÷ 2
TIGm 1.1	2305470	1214.00	1.1	1.5	50 ÷ 600	11 ÷ 2
TIGm 1.3	2305480	1245.00	1.3	1.75	50 ÷ 600	11 ÷ 2

TRITUS



Submersible Pumps c/w Grinder

MODEL	STOCK CODE	PRICE £	MODEL	STOCK CODE	PRICE £	POWER P ₂		PERFORMANCE	
						kW	HP	Q L/min	H m
Single-Phase			Three-Phase						
TRm 0.75	2302270	1429.00	TR 0.75	2302330	1309.00	0.75	1	20 ÷ 125	15 ÷ 2
TRm 0.9	2302280	1461.00	TR 0.9	2302340	1341.00	0.9	1.25	20 ÷ 170	15 ÷ 2
TRm 1.1	2302290	1533.00	TR 1.1	2302350	1392.00	1.1	1.5	20 ÷ 140	21.5 ÷ 2
TRm 1.3	2302300	1565.00	TR 1.3	2302360	1428.00	1.3	1.75	20 ÷ 220	22.5 ÷ 2
TRm 1.5	2302310	2555.00	TR 1.5	2302370	2212.00	1.5	2	20 ÷ 270	25 ÷ 2
-	-	-	TR 2.2	2302380	2363.00	2.2	3	20 ÷ 280	30 ÷ 2
TRm 2.2 AP	2302320	3313.00	TR 2.2 AP	2302390	2555.00	2.2	3	20 ÷ 270	35 ÷ 2
-	-	-	TR 3 AP	2302400	2659.00	3	4	20 ÷ 300	32.5 ÷ 2
			TR 3	2305490	2858.00	3	4	20 ÷ 400	35.5 ÷ 2
			TR 4	2305500	2890.00	4	5.5	20 ÷ 410	39.5 ÷ 2

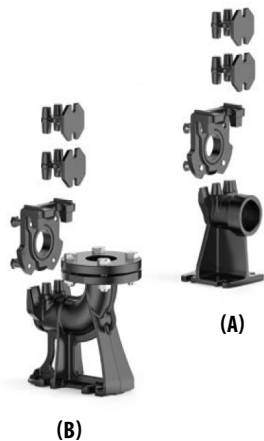
- Grinder: high resistance tempered stainless steel
- Power cable: 10 metres as standard
- Impeller: technopolymer for TIG 0.55, TIG 0.75, TIG 1.1, TIG 1.3, TR 0.75, TR 0.9, TR 1.1, TR 1.3, precision cast AISI 304 stainless steel for TR 1.5, TR 2.2, TR 2.2 AP, TR 3 AP, TR 3, TR 4
- Two mechanical seals separated by an oil chamber
- Standard supply single-phase version: electrical cabinet with start-up and operating capacitors (not for TIG model), windings with built-in thermal overload protector, external float switch



Guide Rail Kits

For Pump	Stock Code	DN	£
HORIZONTAL DELIVERY WITH ¾" RAILS (A)			
TR 0.75, TR 0.9, TR 1.1, TR 1.3	2302410	2"	166.00
TR 1.5, TR 2.2,	2302420	2"	166.00
TR 2.2 AP, TR 3 AP,	2302430	2"	198.00
VERTICAL DELIVERY WITH ¾" RAILS (B)			
TR 0.75, TR 0.9, TR 1.1, TR 1.3	2302440	2 ½"	287.00
TR 1.5, TR 2.2	2302450	2 ½"	287.00
TR 2.2 AP, TR 3 AP,	2302460	2 ½"	319.00

60Hz available to order - add 20%
Performance data is approximate for guidance only. For critical applications check with latest Catalogue or phone for duty confirmation.



VX 55-65-80



Submersible Vortex Pumps for Sewage Water

MODEL	STOCK CODE	PRICE £	POWER		PERFORMANCE		PASSAGE of solids mm
			P ₂ kW	HP	Q L/min	H m	
Three-Phase							
VX 40/50	2302490	2587.00	3	4	100 ÷ 900	22 ÷ 5.5	Ø 50
VX 55/50	2302500	2786.00	4	5.5	100 ÷ 1000	25 ÷ 6.5	Ø 50
VX 40/65	2302510	2858.00	3	4	200 ÷ 1200	15.6 ÷ 2.5	Ø 65
VX 55/65	2302520	2992.00	4	5.5	200 ÷ 1350	19.4 ÷ 3.7	Ø 65
VX 75/65	2302530	3114.00	5.5	7.5	200 ÷ 1500	23.6 ÷ 5.5	Ø 65
VX 40/50	2302540	2858.00	3	4	200 ÷ 1200	11.5 ÷ 3	Ø 80
VX 55/80	2302550	3059.00	4	5.5	200 ÷ 1400	16 ÷ 4	Ø 80
VX 75/80	2302560	3178.00	5.5	7.5	200 ÷ 1600	21 ÷ 4.5	Ø 80

4-POLE VERSION

VX4 10/50	2305510	2794.00	0.75	1	100 ÷ 600	6.4 ÷ 1	Ø 50
VX4 10/65	2305520	2842.00	0.75	1	100 ÷ 900	6 ÷ 1	Ø 65
VX4 10/80	2305530	2890.00	0.75	1	200 ÷ 900	5.3 ÷ 1	Ø 80

- Impeller: Cast Iron Vortex with an Epoxy Electro Coating treatment
- Power cable: 10 metres as standard

BC 35-50



Submersible Double Channel Pumps for Sewage Water

MODEL	STOCK CODE	PRICE £	POWER		PERFORMANCE		PASSAGE of solids mm
			P ₂ kW	HP	Q L/min	H m	
Three-Phase							
BC 40/35	2302570	2922.00	3	4	300 ÷ 1500	18.5 ÷ 5.5	Ø 35
BC 55/35	2302580	3008.00	4	5.5	300 ÷ 1700	22.5 ÷ 7.5	Ø 35
BC 75/35	2302590	3126.00	5.5	7.5	300 ÷ 1900	27.5 ÷ 10	Ø 35
BC 40/50	2302600	2954.00	3	4	300 ÷ 1800	16 ÷ 4.5	Ø 50
BC 55/50	2302610	3066.00	4	5.5	300 ÷ 2100	20 ÷ 6	Ø 50
BC 75/50	2302620	3186.00	5.5	7.5	300 ÷ 2300	24.5 ÷ 7.5	Ø 50

4-POLE VERSION

BC4 10/50	2305540	2954.00	0.75	1	100 ÷ 1200	5.8 ÷ 1	Ø 50
-----------	---------	---------	------	---	------------	---------	------

- Power cable: 10 metres as standard
- Impeller: Cast Iron Vortex with an Epoxy Electro Coating treatment

Guide Rail Kits



For Pump	Stock Code	DN	£
HORIZONTAL DELIVERY WITH ¾" RAILS (A)			
VX /50,	2302640	2"	208.00
VERTICAL DELIVERY WITH ¾" RAILS (B)			
VX /50	2302660	2 ½"	358.00
VX /65, BC /35	2302670	3"	476.00
VX /80, BC /50	2302680	3"	492.00

VXC 4



Submersible Vortex Pumps for Sewage Water

MODEL	STOCK CODE	PRICE £	POWER P ₂		PERFORMANCE		PASSAGE of solids mm
			kW	HP	Q L/min	H m	
Three-Phase							
VXC4 40/100	2302690	5189.00	3	4	300 ÷ 1700	7.6 ÷ 2	Ø 100
VXC4 50/100	2302700	5269.00	3.7	5	300 ÷ 2000	10.2 ÷ 2.7	Ø 100
VXC4 55/100	2302710	5349.00	4	5.5	300 ÷ 2200	11.7 ÷ 3	Ø 100
VXC4 100/80	2302720	10363.00	7.5	10	800 ÷ 4000	14.7 ÷ 4.5	Ø 80
VXC4 125/80	2302730	10411.00	9.2	12.5	800 ÷ 4250	16.7 ÷ 5	Ø 80
VXC4 150/80	2302740	10459.00	11	15	800 ÷ 4500	18.8 ÷ 5.5	Ø 80
VXC4 200/80	2302750	10539.00	15	20	800 ÷ 5000	22.1 ÷ 7	Ø 80

- Power cable: 10 metres as standard
- Impeller: Cast Iron Vortex

MC 4



Submersible Double Channel Pumps for Sewage Water

MODEL	STOCK CODE	PRICE £	POWER P ₂		PERFORMANCE		PASSAGE of solids mm
			kW	HP	Q L/min	H m	
Three-Phase							
MC4 40/55	2302760	5349.00	3	4	400 ÷ 2200	10.5 ÷ 3.5	Ø 55
MC4 50/55	2302770	5429.00	3.7	5	400 ÷ 2400	12.5 ÷ 4.8	Ø 55
MC4 55/55	2302780	5509.00	4	5.5	400 ÷ 2600	13.9 ÷ 5.3	Ø 55
MC4 100/80	2302790	10874.00	7.5	10	800 ÷ 4250	17 ÷ 7	Ø 80
MC4 125/80	2302800	10922.00	9	12.5	800 ÷ 4500	19 ÷ 8	Ø 80
MC4 150/80	2302810	10954.00	11	15	800 ÷ 4750	21 ÷ 9.5	Ø 80
MC4 200/80	2302820	11050.00	15	20	800 ÷ 5000	26 ÷ 12.5	Ø 80

- Power cable: 10 metres as standard
- Impeller: Cast Iron Double Channel



Guide Rail Kits

For Pump	Stock Code	DN	£
VERTICAL DELIVERY WITH 2" RAILS			
VXC4, MC4 /80	2302860	4"	1158.00
MC4 /55	2302870	3"	1102.00



Domestic Series

COMPATTA EVO

SPECIFICATIONS

Vortex Impeller 2850 rpm
 G = Float Switch
 M = 1 ~ 230V
 T = 3 ~ 400V
 MG = Singlephase with float switch
 TG = Threephase with float switch
 Double Mechanical Seal



DNA series

SPECIFICATIONS

Vortex Impeller
 G = Float Switch
 M = 1 ~ 230V
 T = 3 ~ 400V
 MG = Singlephase with float switch
 TG = Threephase with float switch
 Double Mechanical Seal

DNB series

SPECIFICATIONS

S-Flow double channel impeller
 G = Float Switch
 M = 1 ~ 230V
 T = 3 ~ 400V
 MG = Singlephase with float switch
 TG = Threephase with float switch
 Double Mechanical Seal



A series

SPECIFICATIONS

Single / Three channel Impeller 2850 rpm
 G = Float Switch
 M = 1 ~ 230V
 T = 3 ~ 400V
 MG = Singlephase with float switch
 EX = Explosion proof version
 II 2 G d c IIB T4 X



V series with Vortex Impeller

SPECIFICATIONS

Vortex Impeller 2850 rpm
 G = Float Switch
 M = 1 ~ 230V
 T = 3 ~ 400V
 MG = Singlephase with float switch
 EX = Explosion proof version
 II 2 G d c IIB T4 X



V series 4 pole

SPECIFICATIONS

Single channel Impeller 1450 rpm
 G = Float Switch
 M = 1 ~ 230V
 T = 3 ~ 400V
 MG = Singlephase with float switch
 EX = Explosion proof version
 II 2 G d c IIB T4 X



VTH series

SPECIFICATIONS

Vortex Impeller T
 = 3 ~ 400V
 2850 rpm



GRIX series

SPECIFICATIONS

Grinder Impeller 2850 rpm
 G = Float Switch
 M = 1 ~ 230V
 T = 3 ~ 400V
 MG = Singlephase with float switch
 TG = Threephase with float switch



G series

Submersible Grinder pumps

SPECIFICATIONS

Grinder Impeller 2850 rpm
 G = Float Switch
 M = 1 ~ 230V
 T = 3 ~ 400V
 MG = Singlephase with float switch
 EX = Explosion proof version
 II 2 G d c IIB T4 X



FOR DRENO ACCESSORIES INCLUDING FOOT SUPPORT & AUTO COUPLINGS PLEASE SEE PAGES 84-86.

COMPATTA EVO



Domestic Series

MODEL	STOCK CODE	DELIVERY	PRICE	SOLID Ømm	POWER	WEIGHT
			£		P ₂ kW	
COMPATTA EVO 22 M	2302880	G 2"	683.00	40	0.56	19
COMPATTA EVO 22 M/G	2302890	G 2"	715.00	40	0.56	19
COMPATTA EVO 22 T	2302900	G 2"	692.00	40	0.56	16.5
COMPATTA EVO 22 T/G	2302910	G 2"	907.00	40	0.56	19.5
COMPATTA EVO 32 M	2302920	G 2"	754.00	40	0.75	19
COMPATTA EVO 32 M/G	2302930	G 2"	782.00	40	0.75	19
COMPATTA EVO 32 T	2302940	G 2"	766.00	40	0.75	19.5
COMPATTA EVO 32 T/G	2302950	G 2"	978.00	40	0.75	19.5
COMPATTA EVO 4 M	2302960	G 2"	1048.00	50	1.1	21.5
COMPATTA EVO 4 M/G	2302970	G 2"	1080.00	50	1.1	21.5
COMPATTA EVO 4 T	2302980	G 2"	1057.00	50	1.1	21.5
COMPATTA EVO 4 T/G	2302990	G 2"	1270.00	50	1.1	21.5
COMPATTA EVO 55 M	2303000	G 2"	1186.00	50	1.5	23
COMPATTA EVO 55 M/G	2303010	G 2"	1227.00	50	1.5	23
COMPATTA EVO 55 T	2303020	G 2"	1166.00	50	1.5	23
COMPATTA EVO 55 T/G	2303030	G 2"	1382.00	50	1.5	23

M = 1~230V MG = 1~230V + Float Switch T = 3~400V TG = 3~400V + Float Switch

DNA SERIES



DNA Series

MODEL	STOCK CODE	DELIVERY	PRICE	SOLID Ømm	POWER	WEIGHT
			£		P ₂ kW	
DNA 65-2/110 M	2303040	DN 65 PN 10	1351.00	65	1.1	29
DNA 65-2/110 MG	2303050	DN 65 PN 10	1395.00	65	1.1	29
DNA 65-2/110 T	2303060	DN 65 PN 10	1294.00	65	1.1	29
DNA 65-2/110 TG	2303070	DN 65 PN 10	1507.00	65	1,1	29
DNA 65-2/150 M	2303080	DN 65 PN 10	1444.00	65	1.1	32
DNA 65-2/150 MG	2303090	DN 65 PN 10	1490.00	65	1.1	32
DNA 65-2/150 T	2303100	DN 65 PN 10	1399.00	65	1.5	32
DNA 65-2/150 TG	2303110	DN 65 PN 10	1613.00	65	1.5	32
DNA 65-2/220 T	2303120	DN 65 PN 10	1566.00	65	2.2	33
DNA 80-2/110 M	2303130	DN 80 PN 16	1435.00	80	1.1	32
DNA 80-2/110 MG	2303140	DN 80 PN 16	1480.00	80	1.1	32
DNA 80-2/110 T	2303150	DN 80 PN 16	1385.00	80	1.1	32
DNA 80-2/110 TG	2303160	DN 80 PN 16	1598.00	80	1.1	32
DNA 80-2/150 M	2303170	DN 80 PN 16	1566.00	80	1.5	34
DNA 80-2/150 MG	2303180	DN 80 PN 16	1612.00	80	1.5	34
DNA 80-2/150 T	2303190	DN 80 PN 16	1522.00	80	1.5	34
DNA 80-2/150 TG	2303200	DN 80 PN 16	1736.00	80	1.5	34
DNA 80-2/220 T	2303210	DN 80 PN 16	1673.00	80	2.2	35
DNA 80-4/090 M	2303220	DN 80 PN 16	1865.00	80	0.9	38
DNA 80-4/090 MG	2303230	DN 80 PN 16	1979.00	80	0.9	38
DNA 80-4/090 T	2303240	DN 80 PN 16	1812.00	80	0.9	38

M = 1~230V MG = 1~230V + Float Switch T = 3~400V TG = 3~400V + Float Switch

FOR DRENO ACCESSORIES INCLUDING FOOT SUPPORT & AUTO COUPLINGS PLEASE SEE PAGES 84-86.

DNB SERIES



DNB Series 2-4 Poles

MODEL	STOCK CODE	DELIVERY	PRICE	SOLID Ømm	POWER	WEIGHT
			£		P ₂ kW	Kg
DNB 65-2/080 M	2303250	DN 65 PN10 G2"	880.00	50	0.8	21
DNB 65-2/080 MG	2303260	DN 65 PN10 G2"	958.00	50	0.8	21
DNB 65-2/080 T	2303270	DN 65 PN10 G2"	907.00	50	0.8	21
DNB 65-2/080 TG	2303280	DN 65 PN10 G2"	1108.00	50	0.8	21
DNB 65-2/110 M	2303290	DN 65 PN10 G2"	1351.00	50	1.1	29
DNB 65-2/110 MG	2303300	DN 65 PN10 G2"	1395.00	50	1.1	29
DNB 65-2/110 T	2303310	DN 65 PN10 G2"	1294.00	50	1.1	29
DNB 65-2/110 TG	2303320	DN 65 PN10 G2"	1507.00	50	1.1	29
DNB 65-2/150 M	2303330	DN 65 PN10 G2"	1444.00	50	1.5	31
DNB 65-2/150 MG	2303340	DN 65 PN10 G2"	1490.00	50	1.5	31
DNB 65-2/150 T	2303350	DN 65 PN10 G2"	1399.00	50	1.5	31
DNB 65-2/150 TG	2303360	DN 65 PN10 G2"	1613.00	50	1.5	31
DNB 65-2/220 T	2303370	DN 65 PN10 G2"	1566.00	50	2.2	35
DNB 65-2/220-1 T	2303380	DN 65 PN10 G2"	1571.00	50	2.2	36
DNB 65-2/220-2 T	2303390	DN 65 PN10 G2"	1571.00	50	2.2	36
DNB 80-2/150 M	2303400	DN 80 PN 16	1593.00	70	1.5	32.5
DNB 80-2/150 MG	2303410	DN 80 PN 17	1642.00	70	1.5	32.5
DNB 80-2/150 T	2303420	DN 80 PN 18	1551.00	70	1.5	32.5
DNB 80-2/150 T/G	2303430	DN 80 PN 19	1765.00	70	1.5	32.5
DNB 80-2/220 T	2303440	DN 80 PN 20	1705.00	70	2.2	34.5
DNB 80-2/220-1 T	2303450	DN 80 PN 21	1705.00	70	2.2	35
DNB 80-4/110 M	2303460	DN 80 PN 22	1922.00	70	1.1	36
DNB 80-4/110 MG	2303470	DN 80 PN 23	2041.00	70	1.1	36
DNB 80-4/110 T	2303480	DN 80 PN 24	1872.00	70	1.1	36

M = 1~230V MG = 1~230V + Float Switch T = 3~400V TG = 3~400V + Float Switch

A SERIES



A Series 2 Pole

MODEL	STOCK CODE	DELIVERY	PRICE	SOLID Ømm	POWER	WEIGHT
			£		P ₂ kW	Kg
AM 65/2/125 C.236	2303490	DN65 PN10	2747.00	40	1.5	44.5
AM 65/2/125 C.236/G	2303500	DN65 PN10	2901.00	40	1.5	44.5
AT 65/2/125 C.236	2303510	DN65 PN10	1969.00	40	1.5	43
AT 65/2/125 C.237	2303520	DN65 PN10	2324.00	40	2.2	43.5
AT 65/2/152 C.246	2303530	DN65 PN10	3255.00	45	3	60
AT 65/2/152 C.247	2303540	DN65 PN10	4295.00	45	4	62.5
AT 80/2/152 C.246	2303550	DN80 PN16	3801.00	45	3	61
AT 80/2/152 C.247	2303560	DN80 PN16	4854.00	45	4	65
AT 80/2/173 C.254	2303570	DN80 PN16	5461.00	55	5.5	92
AT 80/2/173 C.257	2303580	DN80 PN16	6345.00	55	7.5	93
AT 80/2/173 C.259	2303590	DN80 PN16	7355.00	55	9.5	94.5

M = 1~230V T = 3~400V

FOR DRENO ACCESSORIES INCLUDING FOOT SUPPORT & AUTO COUPLINGS PLEASE SEE PAGES 84-86.

A SERIES



A Series 4 Pole

MODEL	STOCK CODE	DELIVERY	PRICE	SOLID Ømm	POWER	WEIGHT
			£		P ₂ kW	Kg
AM 80/4/125 C.242	2303600	DN80 PN16	3239.00	75	1.5	58
AM 80/4/125 C.242/G	2303610	DN80 PN16	3356.00	75	1.5	58
AT 80/4/125 C.242	2303620	DN80 PN16	2436.00	75	1.5	56
AT 80/4/152 C.244	2303630	DN80 PN16	3046.00	75	2.2	69
AT 80/4/152 C.245	2303640	DN80 PN16	3403.00	75	3	70
AT 100/4/152 C.243	2303650	DN100 PN16	2959.00	90	1.7	73
AT 100/4/152 C.244	2303660	DN100 PN16	3349.00	90	2.2	73,5
AT 100/4/152 C.245	2303670	DN100 PN16	3739.00	90	3	75,5
AT 100/4/173 C.255	2303680	DN100 PN16	5158.00	90	4	103
AT 100/4/173 C.256	2303690	DN100 PN16	6052.00	90	5.5	108
AT 150/4/173 C.256	2303700	DN150 PN16	8239.00	100	5.8	131
AT 150/4/173 C.258	2303710	DN150 PN16	9142.00	100	7.5	133
AT 150/4/200 C.260	2303720	DN150 PN16	10381.00	80	10	230
AT 150/4/200 C.263	2303730	DN150 PN16	11656.00	80	16.5	256
AT 150/4/200 C.264	2303740	DN150 PN16	12469.00	110	12	260
AT 150/4/200 C.265	2303750	DN150 PN16	16702.00	110	16	276
AT 150/4/240 C.275	2303760	DN150 PN16	20264.00	120	20	308
AT 150/4/240 C.280	2303770	DN150 PN16	23523.00	120	25	328
AT 150/4/340 C.285	2303780	DN150 PN16	28551.00	110	35	550
AT 150/4/340 C.290	2303790	DN150 PN16	35359.00	120	40	585
AT 150/4/340 C.295	2303800	DN150 PN16	41120.00	130	51	600
AT 150/4/340 C.300	2303810	DN150 PN16	42468.00	140	60	600
AT 200/4/200 C.265	2303820	DN200 PN10	20359.00	110	15	296
AT 200/4/200 C.270	2303830	DN200 PN10	22287.00	110	20	340
AT 200/4/200 C.275	2303840	DN200 PN10	24333.00	110	20	340
AT 200/4/200 C.280	2303850	DN200 PN10	27615.00	110	26	343

M = 1~230V T = 3~400V

V SERIES



V Series 2 Pole

MODEL	STOCK CODE	DELIVERY	PRICE	SOLID Ømm	POWER	WEIGHT
			£		P ₂ kW	Kg
VM 65/2/125 C.336	2303860	DN65 PN10	2747.00	50	1.5	43.5
VM 65/2/125 C.336/G	2303870	DN65 PN10	2901.00	50	1.5	43.5
VT 65/2/125 C.336	2303880	DN65 PN10	1969.00	50	1.5	41.5
VT 65/2/125 C.337	2303890	DN65 PN10	2324.00	50	2.2	42.5
VT 65/2/152 C.346	2303900	DN65 PN10	3255.00	60	3	59
VT 65/2/152 C.347	2303910	DN65 PN10	4295.00	60	4	62
VT 80/2/152 C.346	2303920	DN80 PN16	3801.00	65	3.2	63.5
VT 80/2/152 C.347	2303930	DN80 PN16	4854.00	65	4.2	63.5
VT 80/2/173 C.354	2303940	DN80 PN16	5461.00	70	5.2	86.5
VT 80/2/173 C.357	2303950	DN80 PN16	6345.00	70	7.5	91
VT 80/2/173 C.359	2303960	DN80 PN16	7355.00	70	9	92

M = 1~230V T = 3~400V

FOR DRENO ACCESSORIES INCLUDING FOOT SUPPORT & AUTO COUPLINGS PLEASE SEE PAGES 84-86.

V SERIES



V Series 4 Pole

MODEL	STOCK CODE	DELIVERY	PRICE	SOLID Ømm	POWER P ₂ kW	WEIGHT Kg
			£			
VT 65/4/152 C.344	2303970	DN65 PN10	2725.00	65	2.2	66
VT 65/4/152 C.345	2303980	DN65 PN10	3090.00	65	3	67
VM 80/4/125 C.341	2303990	DN80 PN16	3023.00	75	1.1	48
VM 80/4/125 C.341/G	2304000	DN80 PN16	3143.00	75	1.1	48
VT 80/4/125 C.341	2304010	DN80 PN16	2254.00	75	1.1	48
VM 80/4/125 C.342	2304020	DN80 PN16	3239.00	75	1.25	48
VM 80/4/125 C.342/G	2304030	DN80 PN16	3356.00	75	1.25	48
VT 80/4/125 C.342	2304040	DN80 PN16	2436.00	75	1.25	48
VT 80/4/152 C.344	2304050	DN80 PN16	3046.00	80	2.2	66
VT 80/4/152 C.345	2304060	DN80 PN16	3403.00	80	3	70
VT 100/4/152 C.348	2304070	DN100 PN16	2959.00	100	1.7	69
VT 100/4/152 C.349	2304080	DN100 PN16	3349.00	100	2.2	69
VT 100/4/152 C.350	2304090	DN100 PN16	3739.00	100	3	72
VT 100/4/173 C.355	2304100	DN100 PN16	5158.00	90	4	100.5
VT 100/4/173 C.356	2304110	DN100 PN16	6052.00	90	6	107
VT 100/4/173 C.358	2304120	DN100 PN16	6978.00	90	7.5	110
VT 100/4/200 C.362	2304130	DN100 PN16	9900.00	90	12	192
VT 100/4/200 C.363	2304140	DN100 PN16	11119.00	90	15	205
VT 150/4/340 C.385	2304180	DN150 PN16	28551.00	130	35	550
VT 150/4/340 C.390	2304190	DN150 PN16	35359.00	130	45	585
VT 150/4/340 C.395	2304200	DN150 PN16	41120.00	130	55	590

M = 1~230V T = 3~400V

VTH SERIES



VTH Series 2 Pole

MODEL	STOCK CODE	DELIVERY	PRICE	SOLID Ømm	POWER P ₂ kW	WEIGHT Kg
			£			
VTH 80-2/120	2304210	DN 80 PN 16	9352.00	80	12	186
VTH 80-2/150	2304220	DN 80 PN 16	11656.00	80	15	195
VTH 80-2/200	2304230	DN 80 PN 16	13796.00	80	20	242
VTH 80-2/250	2304240	DN 80 PN 16	15476.00	80	25	244
VTH 100-2/150	2304250	DN 100 PN 16	12081.00	100	15	208
VTH 100-2/200	2304260	DN 100 PN 16	14225.00	100	20	253
VTH 100-2/250	2304270	DN 100 PN 16	15903.00	100	25	257
VTH 100-2/300	2304280	DN 100 PN 16	19088.00	100	30	273
VTH 100-2/350	2304290	DN 100 PN 16	20997.00	100	35	274
VTH 100-2/400	2304300	DN 100 PN 16	22619.00	100	40	278
VTH 100-2/400/1	2304310	DN 100 PN 16	22878.00	100	40	281
VTH 100-2/400/2	2304320	DN 100 PN 16	23174.00	110	40	282

FOR DRENO ACCESSORIES INCLUDING FOOT SUPPORT & AUTO COUPLINGS PLEASE SEE PAGES 84-86.

GRIX SERIES GRINDER



GRIX Series 2 Pole

MODEL	STOCK CODE	DELIVERY	PRICE £	SOLID Ømm	POWER P ₂ kW	WEIGHT Kg
GRIX 32-2/090 M	2304330	G 1"¼ DN32 PN6	1060.00	-	0.9	21.5
GRIX 32-2/090 MG	2304340	G 1"¼ DN32 PN6	1177.00	-	0.9	21.5
GRIX 32-2/090 T	2304350	G 1"¼ DN32 PN6	1008.00	-	0.9	21
GRIX 32-2/090 TG	2304360	G 1"¼ DN32 PN6	1221.00	-	0.9	21
GRIX 32-2/110 M	2304370	G 1"¼ DN32 PN6	1475.00	-	1.1	25
GRIX 32-2/110 MG	2304380	G 1"¼ DN32 PN6	1588.00	-	1.1	25
GRIX 32-2/110 T	2304390	G 1"¼ DN32 PN6	1413.00	-	1.1	25.5
GRIX 32-2/110 TG	2304400	G 1"¼ DN32 PN6	1626.00	-	1.1	25.5
GRIX 32-2/140 M	2304410	G 1"¼ DN32 PN6	1604.00	-	1.4	27.5
GRIX 32-2/140 MG	2304420	G 1"¼ DN32 PN6	1719.00	-	1.4	27.5
GRIX 32-2/140 T	2304430	G 1"¼ DN32 PN6	1536.00	-	1.4	28
GRIX 32-2/140 TG	2304440	G 1"¼ DN32 PN6	1751.00	-	1.4	28

M = 1~230V MG = 1~230V + Float Switch T = 3~400V TG = 3~400V + Float Switch
Single phase GRIX pumps are supplied with a starter/capacitor box.

G SERIES GRINDER



G Series 2 Pole M = 1~230V T = 3~400V

MODEL	STOCK CODE	DELIVERY	PRICE £	SOLID Ømm	POWER P ₂ kW	WEIGHT Kg
GX 50-2/090 M	2304450	G 2"	1572.00	6	0.9	25
GX 50-2/090 M	2304460	G 2"	1780.00	6	0.9	25
GX 50-2/090 M/G	2304470	G 2"	1691.00	6	0.9	25
GX 50-2/090 M/G	2304480	G 2"	1893.00	6	0.9	25
GX 50-2/090 T	2304490	G 2"	1492.00	6	0.9	24
GX 50-2/0110 M	2304500	G 2"	2053.00	6	1.1	25
GX 50-2/0110 M	2304510	G 2"	2372.00	6	1.1	25
GX 50-2/0110 M/G	2304520	G 2"	2168.00	6	1.1	25
GX 50-2/0110 M/G	2304530	G 2"	2485.00	6	1.1	25
GX 50-2/0110 T	2304540	G 2"	1962.00	6	1.1	25
GX 50-2/0150 M	2304550	G 2"	2059.00	6	1.5	34
GX 50-2/0150 M	2304560	G 2"	2416.00	6	1.5	34
GX 50-2/0150 M/G	2304570	G 2"	2176.00	6	1.5	34
GX 50-2/0150 M/G	2304580	G 2"	2530.00	6	1.5	34
GX 50-2/0150 T	2304590	G 2"	1970.00	6	1.5	34
GX 50-2/0220 T	2304600	G 2"	2206.00	6	1.5	34
GM 50/2/125 C.155	2304610	G 2" DN32 PN6	3080.00	6	1.7	37.5
GM 50/2/125 C.155/G	2304620	G 2" DN32 PN6	3256.00	6	1.7	37.5
GT 50/2/125 C.155	2304630	G 2" DN32 PN6	2441.00	6	1.7	36.5
GM 50/2/125 C.160	2304640	G 2" DN32 PN6	3482.00	6	2.3	40
GM 50/2/125 C.160/G	2304650	G 2" DN32 PN6	3663.00	6	2.3	40
GT 50/2/125 C.160	2304660	G 2" DN32 PN6	2929.00	6	2.3	38.5
GT 50/2/152 C.165	2304670	G 2" DN50 PN10	4138.00	8	3.2	61
GT 50/2/152 C.170	2304680	G 2" DN50 PN10	5289.00	8	4.2	62
GT 50/2/173 C.175	2304690	G 2" DN50 PN10	7208.00	10	6.2	85
GT 50/2/173 C.180	2304700	G 2" DN50 PN10	8150.00	10	7.8	86
GT 50/2/173 C.185	2304710	G 2" DN50 PN10	9208.00	10	9.5	90

M = 1~230V MG = 1~230V + Float Switch T = 3~400V TG = 3~400V + Float Switch

Single phase pumps supplied with control box made up of:
Switch, Overload Protection, Control Electrode, Relay for float switch, Start Capacitor and 24V exits for protection kit

FOR DRENO ACCESSORIES INCLUDING FOOT SUPPORT & AUTO COUPLINGS PLEASE SEE PAGES 84-86.

Contractor Pumps

The Kappa range of Contractor pumps can pump water containing abrasive particles of sand and clay, shavings and other potentially abrasive objects, present on rocky surfaces, construction and mining sites. Kappa drainage pumps have been built to be used in the most severe conditions with application in places such as quarries, mines, building sites, tunnels, and excavations.

Kappa series pumps have been built using high quality components, such as hardened stainless steel, nitrile rubber and aluminium alloy coatings. This guarantees excellent wear resistance over time.

The protection devices present in the whole range reduce any damage caused by overheating. Their high hydraulic performances and low weight allow a versatile and effective use of Kappa pumps over time.

KAPPA CONTRACTOR



KAPPA Contractor Pumps

MODEL	STOCK CODE	DELIVERY	PRICE £	SOLID Ømm	POWER P ₂ kW	WEIGHT Kg
K040.2.50 M - N	2305260	G 2"	1168.00	-	0.40	18.6
K075.2.50 M - N	2305270	G 2"	1441.00	-	0.75	20
K120.2.50 M - H	2305280	G 2"	2288.00	-	1.2	19
K120.2.50 M/G - H	2305290	G 2"	2359.00	-	1.2	19
K120.2.50 T - H	2305300	G 2"	2288.00	-	1.2	19
K150.2.50 M - N	2305310	G 2"	2468.00	-	1.5	19
K150.2.50 M/G - N	2305320	G 2"	2532.00	-	1.5	19
K150.2.50 T - N	2305330	G 2"	2468.00	-	1.5	19
K220.2.80 - N	2305340	G 3"	3142.00	-	2.2	34
K220.2.80 - H	2305350	G 3"	3197.00	-	2.2	34
K420.2.80 - N	2305360	G 3"	3514.00	-	4.2	37
K420.2.80 - C	2305370	G 3"	3563.00	-	4.2	37
K560.2.80 - H	2305380	G 3"	5231.00	-	5.6	60
K560.2.100 - N	2305390	G 4"	5408.00	-	5.6	63
K560.2.100 - C	2305400	G 4"	5335.00	-	5.6	63
K920.2.100 - N	2305410	G 4"	6495.00	-	9.2	70
K920.2.100 - C	2305420	G 4"	6553.00	-	9.2	70

M = 1~230V MG = 1~230V + Float Switch T = 3~400V

N = Medium H = High Head C = High Flow

Extensive interchangeability allows Kappa pumps to be converted from the N to the C or H version and vice versa.

Also available in 110V. Please contact our sales team for more information.



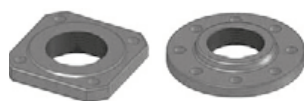
Foot Support

Free Standing Installation

MODEL	STOCK CODE	PRICE
		£
P1 GM - GT 50/2/125	2304720	134.00
P2 GT 50/2/152	2304730	172.00
P3 GT 50/2/173	2304740	188.00
P4 AT - VT - HT 65	2304750	129.00
P5 AT - VT 80	2304760	164.00
P6 AT - VT 100	2304770	214.00
P7 AT - VT 150	2304780	279.00
P8 AT -VT 150 (Bayonet Joint)	2304790	390.00
P9 AT 200	2304800	500.00

Threaded Coupling Flange with thread PN16

Free Standing Installation



MODEL	STOCK CODE	PRICE
		£
F1 DN65 (Square)	2304810	104.00
F2 DN80	2304820	124.00
F3 DN100	2304830	153.00
F4 DN150	2304840	219.00

Flanged Hose Connection

Free Standing Installation



MODEL	STOCK CODE	PRICE
		£
N1 DN65 (Square)	2304850	172.00
N2 DN80	2304860	236.00
N3 DN100	2304870	279.00
N4 DN150	2304880	391.00

Threaded Automatic Coupling Foot

Fixed Installation



MODEL	STOCK CODE	PRICE
		£
DUTY 50 (flanged) (DN32 PN6 / DN50 PN10)	2304890	354.00
DUTY 65 (flanged) (DN65 PN10)	2304900	528.00
DUTY 80 (flanged) (DN80 PN16)	2304910	608.00
DUTY 100 (flanged) (DN100 PN16)	2304920	713.00



Automatic Coupling Foot "Easy" Type A

Fixed Installation

MODEL	STOCK CODE	PRICE
		£
E1.1 1" ¼	2304930	204.00
E2.1 1" ½	2304940	217.00
E3.1 2"	2304950	227.00
E4.1 2" female (for C.149/150)	2304960	267.00

* Standard installation



Automatic Coupling Foot "Easy" Type B

Fixed Installation

MODEL	STOCK CODE	PRICE
		£
E1.2 1" ¼	2304970	182.00
E2.2 1" ½	2304980	190.00
E3.2 2"	2304990	204.00
E4.2 2" female (for C.149/150)	2305000	227.00

* Installation for pumping stations



Automatic Coupling Foot Type B

Fixed Installation

MODEL	STOCK CODE	PRICE
		£
B4 DN 65 PN6	2305010	714.00
B5 DN 80 PN16	2305020	1044.00
B6 DN 100 PN16	2305030	1392.00
B7 DN 150 PN16 (low)	2305040	1962.00
B8 DN 150 PN16 (high)	2305050	2735.00

* Complete with coupling support and guide rails bracket



Guide Rails Bracket for Threaded Automatic Coupling Foot

MODEL	STOCK CODE	PRICE
		£
Easy 1" ¼ - 1" ½ - 2" (Type A)	2305060	50.00

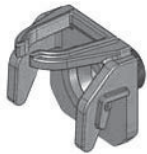
Installation Accessories



Guide Rails Bracket for Automatic Coupling Foot Type B

MODEL	STOCK CODE	PRICE
		£
Duty 50 - Easy 1" ¼ - 1" ½ - 2" (Type B)	2305070	41.00
DN 65	2305080	130.00
DN 80-100-150-200	2305090	153.00
PN10 DN80 Adaptor Claw	2305100	295.00

Installation Accessories



Coupling Support PN16 for Threaded Automatic Coupling Foot

MODEL	STOCK CODE	PRICE
		£
1" ¼ M - Easy	2305110	75.00
1" ½ M - Easy	2305120	82.00
2" M - Easy	2305130	87.00
2" F - Easy	2305140	94.00
DUTY 50	2305150	160.00

Installation Accessories



Coupling Support PN16 for Automatic Coupling foot Type B

MODEL	STOCK CODE	PRICE
		£
DN 65	2305160	287.00
DN 80	2305170	334.00
DN 100	2305180	420.00
DN 150 (High/Low)	2305190	600.00

Installation Accessories



Chain AISI 316

MODEL	STOCK CODE	Ø	MAX LOAD/	PRICE
		mm	Kg	per metre
				£
Mod. 26	2305200	3	100	32.00
Mod. 42	2305210	6	200	45.00
Mod. 65	2305220	10	600	104.00
Hook A2 Ø4	2305230			28.00
Hook A2 Ø8	2305240			35.00
Hook A2 Ø10	2305250			46.00

Installation Accessories